

DROP SAVERS

STUDENT CALENDAR

ACADEMIC YEAR 2023-24

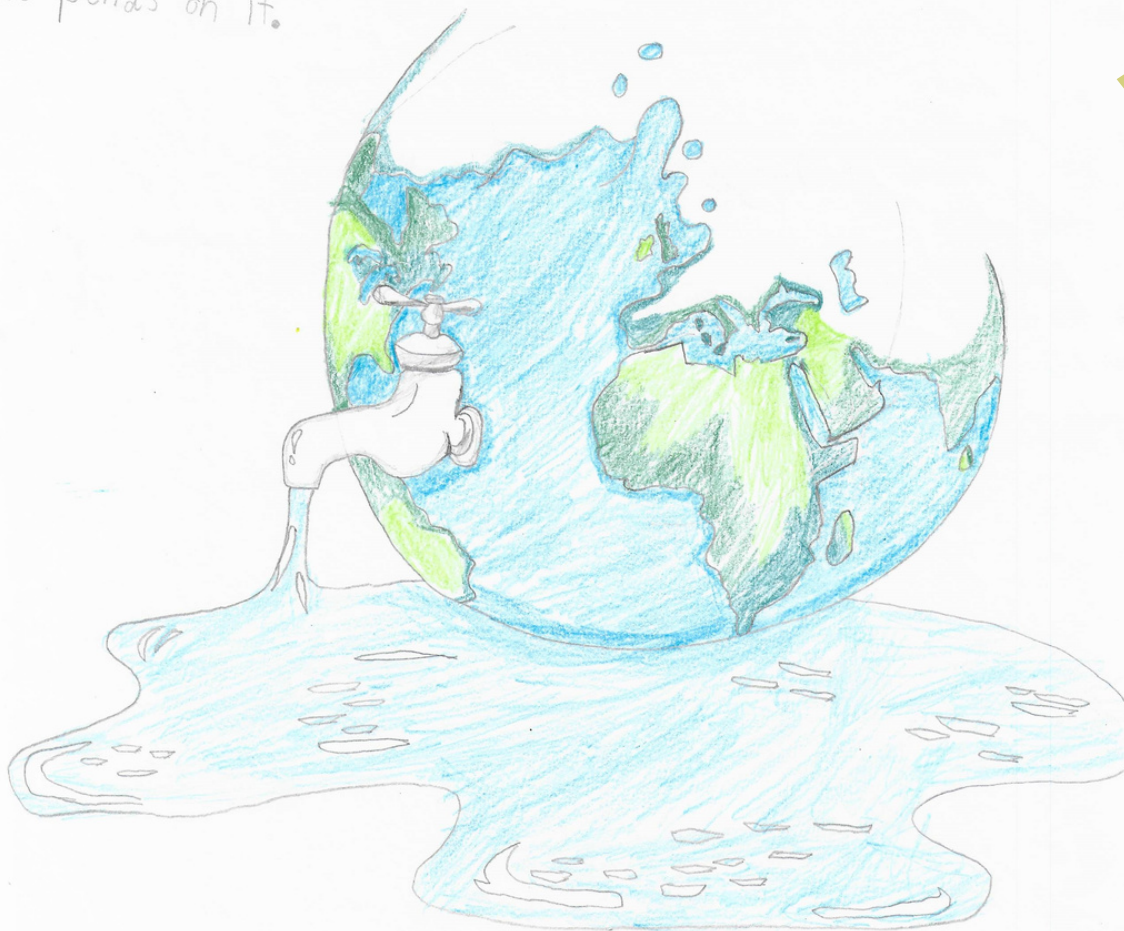
Toho
Water
Authority



Maite Grade 6 Westside K-8 School

Save Water!

Our world
depends on it.



Don't water in the rain

Did you know that it is Florida law to have a working rain sensor for your irrigation system? Make sure to check it annually.

JUNE 2023



DON'T LET THE SUN SOAK IT UP:

No watering between 10 a.m. - 4 p.m.

SUNDAY	MONDAY	TUESDAY	WEDNESDAY	THURSDAY	FRIDAY	SATURDAY
				1	2	3
4	5	6 D-DAY	7	8	9	10
11	12 ORLANDO UNITED DAY	13	14 FLAG DAY	15	16	17
18 FATHER'S DAY	19 JUNETEENTH	20	21	22	23	24
25	26	27	28	29	30	
						

HELP
the
Earth

ONLY wash
full-loads in
the washing
machine



JULY 2023



COVER IT:

Using a pool cover reduces evaporation.

SUNDAY	MONDAY	TUESDAY	WEDNESDAY	THURSDAY	FRIDAY	SATURDAY
						1
2	3	4 INDEPENDENCE DAY	5	6	7	8
9	10	11	12	13	14	15
16	17	18	19	20	21	22
TOHO WATERWORKS SUMMER CAMP (JULY 17 - 21)						
23	24	25	26	27	28	29
30	31					

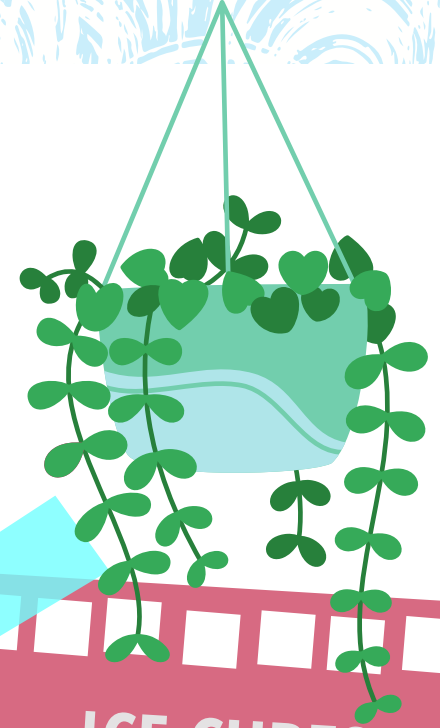


AUGUST 2023



Turning off the faucet while brushing your teeth can save up to 2.5 gallons per minute.

SUNDAY	MONDAY	TUESDAY	WEDNESDAY	THURSDAY	FRIDAY	SATURDAY
		1	2	3	4	5
6	7	8	9	10 <small>FIRST DAY OF SCHOOL FOR STUDENTS/FIRST DAY OF 1ST GRADING PERIOD</small>	11	12
13	14	15	16	17	18	19
20	21	22	23	24	25	26
27	28	29	30	31		
						 Toho Water Authority



ICE CUBES




For hanging baskets, planters and pots, put ice cubes on top of the soil to give your plants a cool drink of water avoiding overflow.

SEPTEMBER 2023



More plants die from over-watering than from under-watering.

SUNDAY	MONDAY	TUESDAY	WEDNESDAY	THURSDAY	FRIDAY	SATURDAY
					1	2
3	4 LABOR DAY - STUDENT/ TEACHER HOLIDAY	5	6	7	8	9
10 GRANDPARENTS DAY	11 PATRIOT DAY	12	13	14	15	16 ROSH HASHANAH
17	NATIONAL POLLUTION PREVENTION WEEK (SEPTEMBER 18-24) WWW.EPA.GOV/P2WEEK				22 PROFESSIONAL DEVELOPMENT DAY/ STUDENT HOLIDAY	23
24	25 YOM KIPPUR	26	27	28	29	30
						

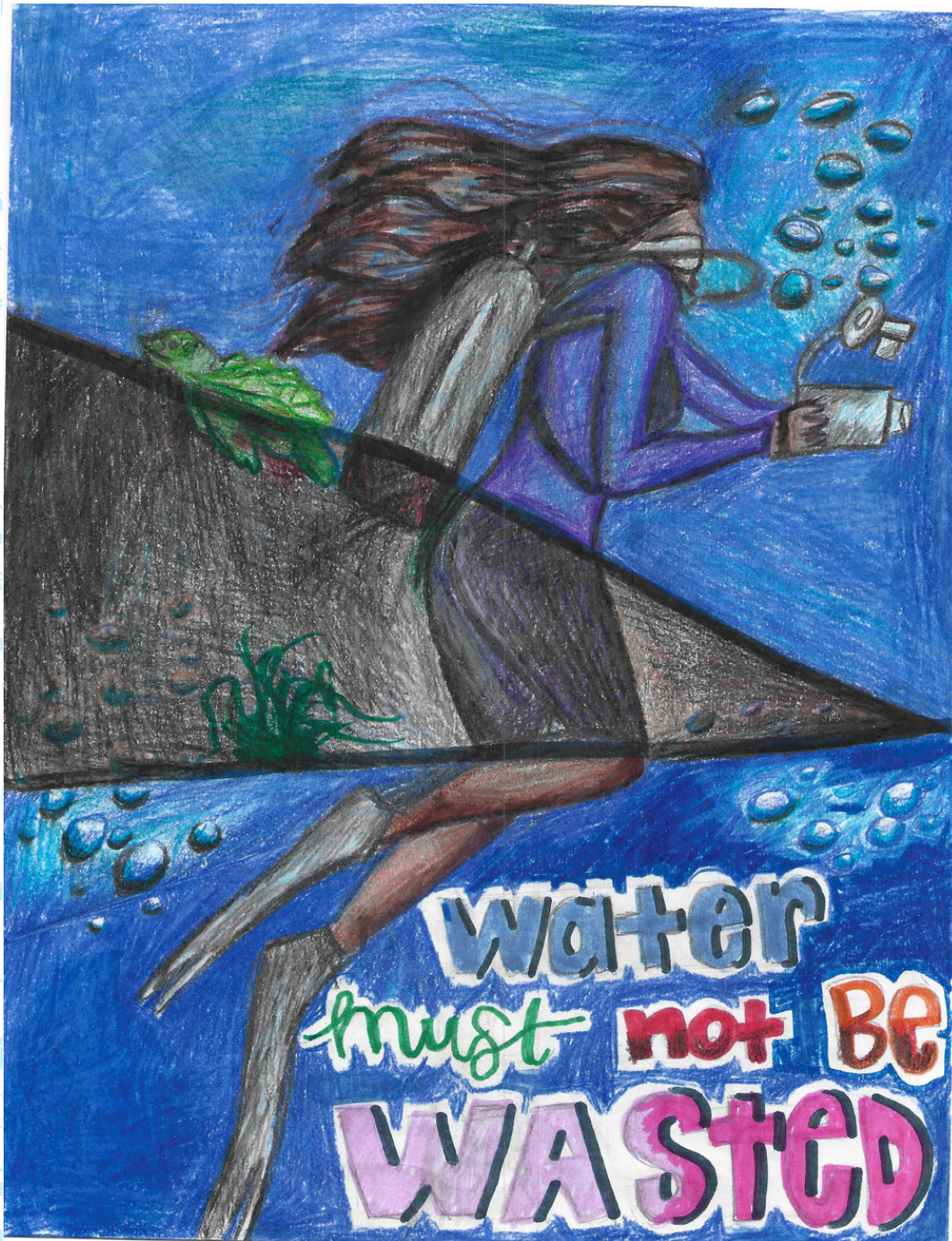


OCTOBER 2023



Washing dark clothes in cold water saves water and energy, and helps your clothes retain their color.

SUNDAY	MONDAY	TUESDAY	WEDNESDAY	THURSDAY	FRIDAY	SATURDAY
1	2	3	4	5	6	7
8	9 COLUMBUS DAY / INDIGENOUS PEOPLES' DAY	10	11	12 END OF 1ST GRADING PERIOD	13 TEACHER WORK DAY/ STUDENT HOLIDAY	14
15	16 BOSS'S DAY FIRST DAY OF 2ND GRADING PERIOD	17	18	19 IMAGINE A DAY WITHOUT WATER DAY	20	21
22	23	24	25	26	27	28
29	30	31 HALLOWEEN				
						



USE WATER WISELY

About **70%** of the planet is covered in water but only **3%** is fresh water and only about **1%** of that is accessible.

NOVEMBER 2023



Use a hose nozzle or turn off the water while washing your car and save up to 100 gallons every time.

SUNDAY	MONDAY	TUESDAY	WEDNESDAY	THURSDAY	FRIDAY	SATURDAY
			1	2	3	4
5 DAYLIGHT SAVING TIME ENDS	6	7 ELECTION DAY	8	9	10 VETERANS DAY - TEACHER/ STUDENT HOLIDAY	11 VETERANS DAY
12 DIWALI	13	14	15	16	17	18
19	20 TEACHER NON-WORK DAY/ STUDENT HOLIDAY	21 TEACHER NON-WORK DAY/ STUDENT HOLIDAY	22 TEACHER NON-WORK DAY/ STUDENT HOLIDAY	23 THANKSGIVING - TEACHER/ STUDENT HOLIDAY	24 TEACHER NON-WORK DAY/ STUDENT HOLIDAY	25
26	27	28	29	30		



DECEMBER 2023



SKIP A WEEK - Your grass goes dormant during the cooler months. Water it every other week.

SUNDAY	MONDAY	TUESDAY	WEDNESDAY	THURSDAY	FRIDAY	SATURDAY
					1	2
3	4	5	6	7 PEARL HARBOR DAY	8 HANUKKAH	9
10	11	12	13	14	15 LAST DAY OF CLASSES/END OF 2ND GRADING PERIOD	16
17	18 WINTER BREAK – TEACHER/ STUDENT HOLIDAY	19 WINTER BREAK – TEACHER/ STUDENT HOLIDAY	20 WINTER BREAK – TEACHER/ STUDENT HOLIDAY	21 WINTER BREAK – TEACHER/ STUDENT HOLIDAY	22 WINTER BREAK – TEACHER/ STUDENT HOLIDAY	23
24 CHRISTMAS EVE	25 CHRISTMAS DAY WINTER BREAK – TEACHER/ STUDENT HOLIDAY	26 KWANZAA WINTER BREAK – TEACHER/ STUDENT HOLIDAY	27 WINTER BREAK – TEACHER/ STUDENT HOLIDAY	28 WINTER BREAK – TEACHER/ STUDENT HOLIDAY	29 WINTER BREAK – TEACHER/ STUDENT HOLIDAY	30
31 NEW YEAR'S EVE						



Water is life...
Let's not waste
it.





Caring
for Water
is Caring
for all of us

"If there is magic on this
planet, it is contained in the water."
Loran Eisely

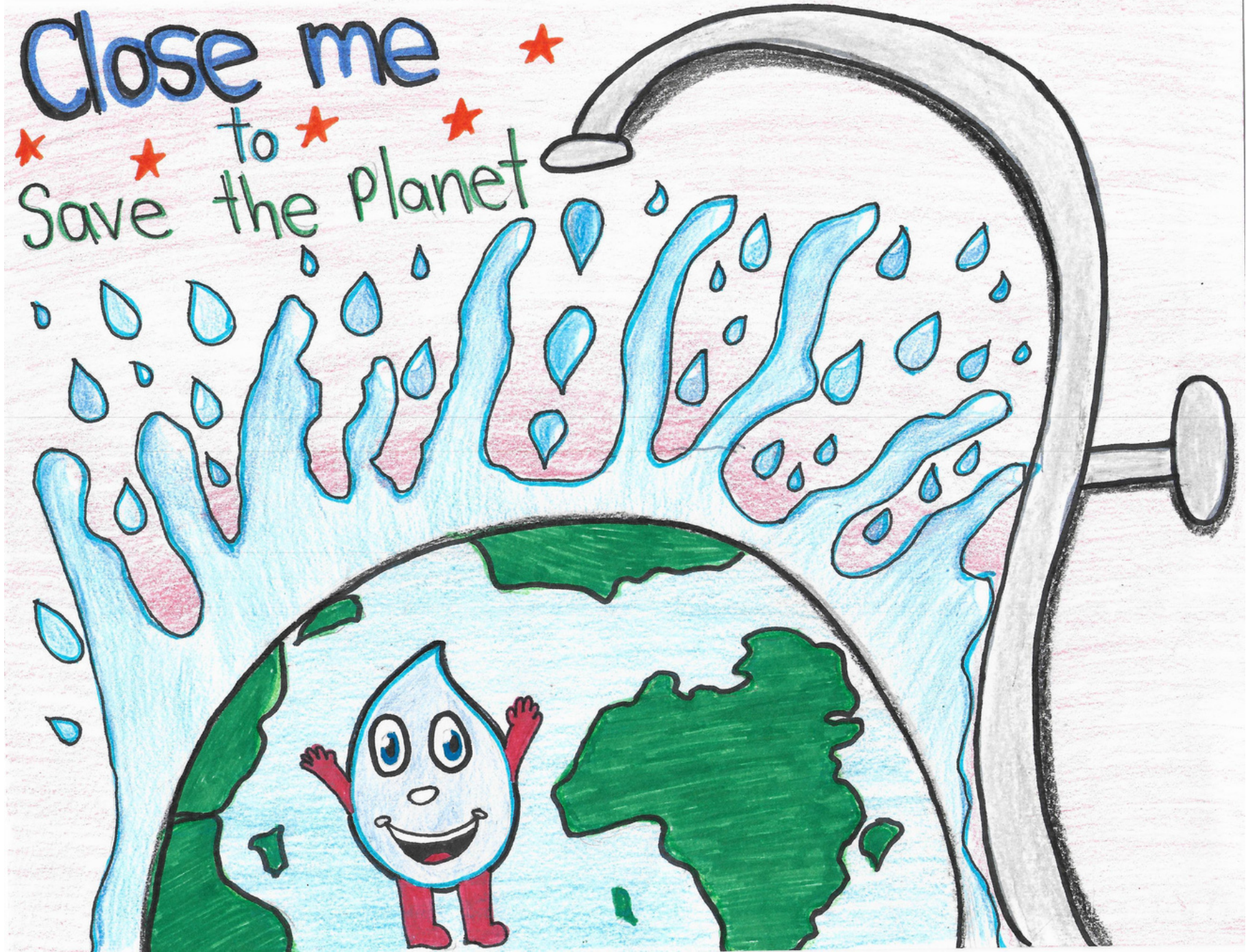
JANUARY 2024



ALL WIPES, paper towels, napkins and tissues do not dissolve as quickly as toilet paper and can clog sewer pipes.

SUNDAY	MONDAY	TUESDAY	WEDNESDAY	THURSDAY	FRIDAY	SATURDAY
	1 NEW YEAR'S DAY WINTER BREAK – TEACHER/ STUDENT HOLIDAY	2 TEACHER WORK DAY/ STUDENT HOLIDAY	3 CLASSES RESUME/FIRST DAY OF 3RD GRADING PERIOD	4	5	6
7	8	9	10	11	12	13
14	15 MARTIN L. KING, JR. DAY – TEACHER/STUDENT HOLIDAY	16	17	18	19	20
21	22	23	24	25	26	27 HOLOCAUST REMEMBRANCE DAY
28	29	30	31			
						

Close me
Save the planet



FEBRUARY 2024



Time your shower to keep it under 5 minutes and save up to 1,000 gallons per month.

SUNDAY	MONDAY	TUESDAY	WEDNESDAY	THURSDAY	FRIDAY	SATURDAY
				1	2 GROUNDHOG DAY	3
4	5	6	7	8	9	10 LUNAR NEW YEAR
11	12	13	14 ASH WEDNESDAY VALENTINE'S DAY	15	16 RODEO DAY - TEACHER NON-WORK DAY/STUDENT HOLIDAY	17
18	19 PRESIDENTS' DAY	20	21	22	23	24
25	26	27	28	29		
						

Cannon Ball!



Every Drop Counts!

~ Ways you can Save water ~

- 1) Turn off faucet when shaving or brushing teeth to save many gallons of water a day.
- 2) Don't do small loads when using a Dishwasher or Washing Machine. 😊



MARCH 2024



Fix a Leak Week (March 11 – 17)

www.epa.gov/watersense

SUNDAY	MONDAY	TUESDAY	WEDNESDAY	THURSDAY	FRIDAY	SATURDAY
					1	2
3	4	5	6	7 END OF 3RD GRADING PERIOD	8 TEACHER WORK DAY/ STUDENT HOLIDAY	9
10 DAYLIGHT SAVING TIME STARTS	11 RAMADAN BEGINS SPRING BREAK – TEACHER/ STUDENT HOLIDAY	12 SPRING BREAK – TEACHER/ STUDENT HOLIDAY	13 SPRING BREAK – TEACHER/ STUDENT HOLIDAY	14 SPRING BREAK – TEACHER/ STUDENT HOLIDAY	15 SPRING BREAK – TEACHER/ STUDENT HOLIDAY	16
17 ST. PATRICK'S DAY	18 CLASSES RESUME/ FIRST DAY OF 4TH GRADING PERIOD	19	20	21	22 WORLD WATER DAY	23
24 PALM SUNDAY	25 HOLI	26	27	28	29 GOOD FRIDAY	30
31 EASTER	<p>Use WaterSense labeled products in your home, yard and business. www.epa.gov/watersense</p> 					



APRIL 2024



Landscape with drought tolerant and Florida friendly trees and plants. www.floridayards.org

SUNDAY

MONDAY

TUESDAY



WEDNESDAY

THURSDAY

FRIDAY

SATURDAY

April is Water Conservation Month!

1	2	3	4	5	6
7	8 APRIL FOOLS' DAY	9	10	11	12
13	14	15	16	17	18
19	20	21	22 TAX DAY  PASSOVER EARTH DAY	23	24
25	26 ARBOR DAY	27	28	29	30
					



MAY 2024



There are a number of ways to save water and they all start with you.

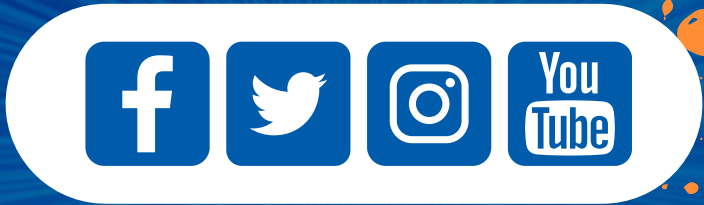
SUNDAY	MONDAY	TUESDAY	WEDNESDAY	THURSDAY	FRIDAY	SATURDAY
			1	2	3	4
5	6	7	8	9	10	11
NATIONAL DRINKING WATER WEEK (MAY 5-11) WWW.AWWA.ORG						
CINCO DE MAYO						
12	13	14	15	16	19	18
WATER REUSE WEEK (MAY 14-18) WWW.SFWMD.GOV						
MOTHER'S DAY						
19	20	21	22	23	24	25
26	27	28	29	30	31	
	MEMORIAL DAY TEACHER/ STUDENT HOLIDAY		END OF 4TH GRADING PERIOD – LAST STUDENT DAY	TEACHER WORK DAY/LAST TEACHER DAY		

NUMBERS

NOTES

NUMBERS	NOTES

We thank all the students who submitted drawings this year and are grateful to the teachers and parents who encouraged them. If you are interested in learning more about Toho's Water Conservation Poster Contest, please contact our Communications Leader Mary Cox at **407-944-5142** or email: **postercontest@tohowater.com**.



toho
water
.com